



Government of India
Ministry of Earth Sciences
India Meteorological Department



Press Release

Date: 01st July, 2025

Time of Issue: 1345 hours IST

Subject: Active monsoon conditions likely to continue over many parts of Northwest, Central and East India during next 6-7 days with Extremely heavy rainfall (≥ 20 cm) very likely at isolated places over Madhya Pradesh, West Uttar Pradesh and East Rajasthan today.

Realised weather during past 24 hours till 0830 hours IST of today, the 01st July, 2025 (Annexure II):

- ❖ **Heavy to very heavy rainfall with extremely heavy falls** has been recorded at isolated places over Himachal Pradesh, East Uttar Pradesh and West Madhya Pradesh.
- ❖ **Heavy to very heavy rainfall** has been recorded at isolated places over Odisha, East Madhya Pradesh, Vidarbha, Chhattisgarh, East Rajasthan, Madhya Maharashtra; **Heavy rainfall** at isolated places over West Uttar Pradesh, Haryana, Gujarat state, Jharkhand, Telangana, Konkan and Assam.
- ❖ **Thunderstorm accompanied with Squally/Gusty winds with speed 60-90 kmph** at isolated places over Himachal Pradesh, Coastal Andhra Pradesh & Yanam; **with speed 40-60 kmph** at isolated places over Madhya Maharashtra, Punjab, West Madhya Pradesh, Andaman & Nicobar Islands, Marathwada, Jharkhand, Konkan, Bihar, East Uttar Pradesh, Tamil Nadu, Rayalaseema, Telangana, Interior Karnataka.

For more details of realised weather, kindly refer [Annexure I](#),

i. Weather Systems, Forecast and Warnings (refer to Annexure II & III):

- ❖ The **low-pressure area** over Gangetic West Bengal & adjoining north Odisha lay over Jharkhand and neighbourhood at 0830 hrs IST of today, the 01st July 2025. The associated cyclonic circulation extending upto mid-tropospheric levels. It is likely to move slowly west-northwestwards across Jharkhand during next 24 hours.
- ❖ Monsoon trough is active and is near its normal position at mean sea level.
- ❖ A trough runs from northwest Uttar Pradesh to cyclonic circulation associated with the low-pressure area over Jharkhand and neighbourhood across southeast Uttar Pradesh level in lower tropospheric levels.
- ❖ An upper air cyclonic circulation lies over central Assam in lower tropospheric levels.

Under the influence of these systems, the following weather is likely:

East & Central India:

- ✓ **Extremely heavy rainfall (≥ 20 cm)** very likely at isolated places over Madhya Pradesh on 01st July.
- ✓ Isolated **heavy rainfall** over Madhya Pradesh, Vidarbha, Chhattisgarh during 01st-07th July; Bihar, West Bengal & Sikkim, Jharkhand, Odisha during 01st-05th July with **very heavy rainfall** over Madhya Pradesh on 02nd and during 05th-07th; Jharkhand on 01st; Odisha during 01st-03rd July.
- ✓ Light/moderate rainfall at most/many places accompanied with **thunderstorm, lightning** likely over the region during next 7 days.

Northwest India:

- ✓ **Extremely heavy rainfall (≥ 20 cm)** very likely at isolated places over West Uttar Pradesh, East Rajasthan on 01st July.
- ✓ Isolated **heavy rainfall** likely over Himachal Pradesh, Uttarakhand, East Rajasthan during 01st-07th July; Uttar Pradesh during 01st-05th July; Punjab, Haryana & Chandigarh on 01st and during 05th-07th July; West Rajasthan during 01st-04th July with **very heavy rainfall over Himachal Pradesh on 01st, 02nd and during 05th-07th; Uttarakhand on 02nd; Punjab on 06th & 07th; Haryana on 01st, 06th & 07th; Uttar Pradesh on 01st & 02nd July and East Rajasthan during 01st-04th July.**
- ✓ Light/moderate rainfall at most/many places accompanied with **thunderstorm, lightning & gusty winds speed reaching 30-40 kmph** likely over Northwest India during next 7 days.

West India:

- ✓ **Heavy to very heavy rainfall** at isolated places likely over Konkan & Goa, Ghat areas of Madhya Maharashtra, Gujarat region and heavy rainfall over Saurashtra & Kutch during next 7 days.

Northeast India:

- ✓ Light/moderate rainfall at most places accompanied with **thunderstorm, lightning and isolated heavy to very heavy rainfall** likely to continue over Northeast India during next 7 days.

South Peninsular India:

- ✓ Isolated **heavy rainfall** likely over Coastal Andhra Pradesh on 01st; Telangana on 01st & 02nd July; Kerala & Mahe during 02nd-05th July, Coastal & North Interior Karnataka during 02nd-07th July; South Interior Karnataka during 03rd-07th July.
- ✓ **Strong surface winds** (speed reaching 40-50 kmph) very likely over South Peninsular India during next 7 days.
- ✓ Light/moderate rainfall at many/some places over Kerala & Mahe, Lakshadweep, Coastal Karnataka; isolated to scattered rainfall accompanied with isolated **thunderstorm, lightning** over Coastal Andhra Pradesh & Yanam, Telangana, Rayalaseema during next 7 days.

Hot & Humid Weather warning:

- ❖ **Hot & humid weather** is likely to prevail over Tamil Nadu, Puducherry & Karaikal on 01st & 02nd July.

Fishermen Warnings:

- ❖ Fishermen are advised to avoid venturing into the following from 01st July to 06th July 2025 to the following Areas:

Arabian Sea:

- ❖ Along and off Gujarat, Konkan, Goa coasts; along and off the Somalia coast and adjoining sea areas, Oman and adjoining Yemen coast & adjoining sea areas; over central & adjoining north, south Arabian Sea during day 1 to day 5 (01st to 6th July); most parts of north Arabian Sea for day 1 and day 2 (01st & 2nd July), most parts of northeast and some parts of northwest Arabian Sea for day 3 (02nd July), southern parts of north Arabian Sea for day 4 & day 5 (04th & 5th July).

Bay of Bengal:

- ❖ Along and off north Andhra Pradesh coast for day 1 to day 5 (01st to 6th July); along and off Odisha, West Bengal coasts for day 1 & day 2 (01st & 2nd July); over most parts of central Bay of Bengal for day 1 to day 4 (01st to 5th July), many parts of central Bay of Bengal for day 5 (05th July); few northern parts of southwest Bay of Bengal and Gulf of Mannar for day 3 (03rd July); few northern parts of southeast Bay of Bengal for day 4 (04th July); entire north Bay of Bengal and Andaman Sea for day 1 (01st July), over northwest Bay of Bengal for day 2 (02nd July).
- ❖ Total suspension of fishing operations is suggested over above mentioned areas and dates.

ii. Weather conditions and forecast over Delhi/NCR during 01st to 04th July, 2025 (Annexure IV)

For more details, kindly refer National Weather Bulletin:

https://mausam.imd.gov.in/responsive/all_india_forecast_bulletin.php

For District wise warnings refer: <https://mausam.imd.gov.in/responsive/districtWiseWarningGIS.php>

Rainfall recorded (in cm) during past 24 hours till 0830 hours IST of today, the 01st July:

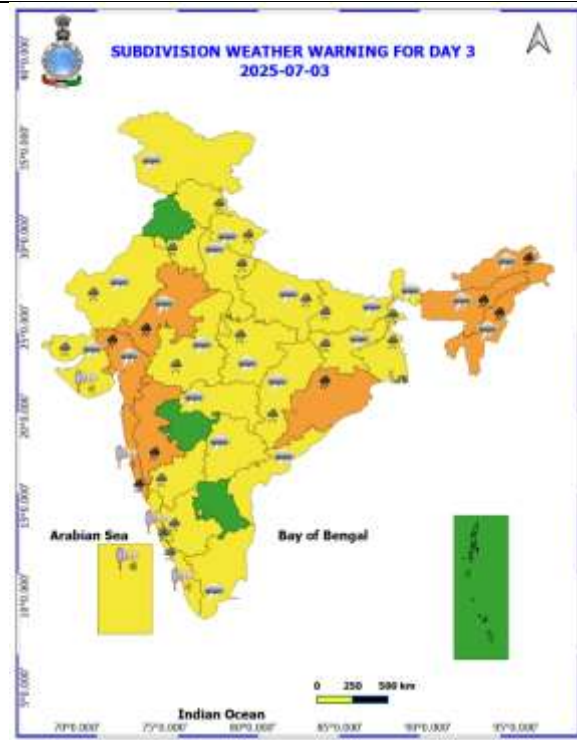
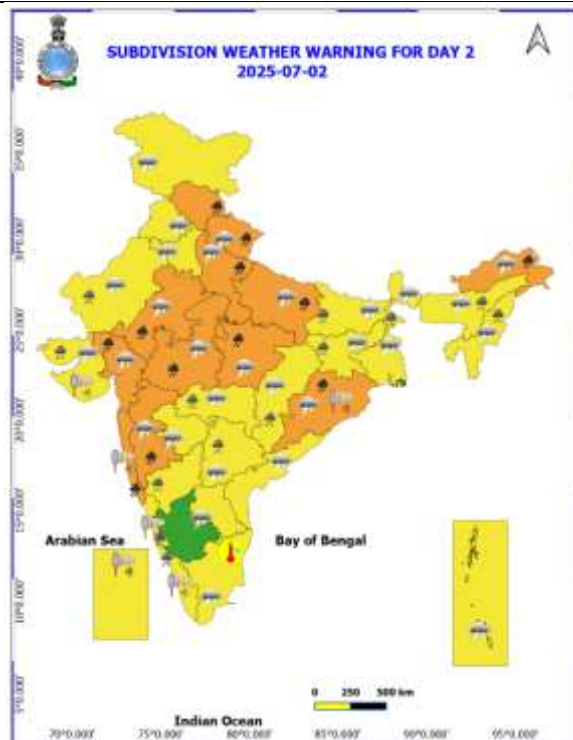
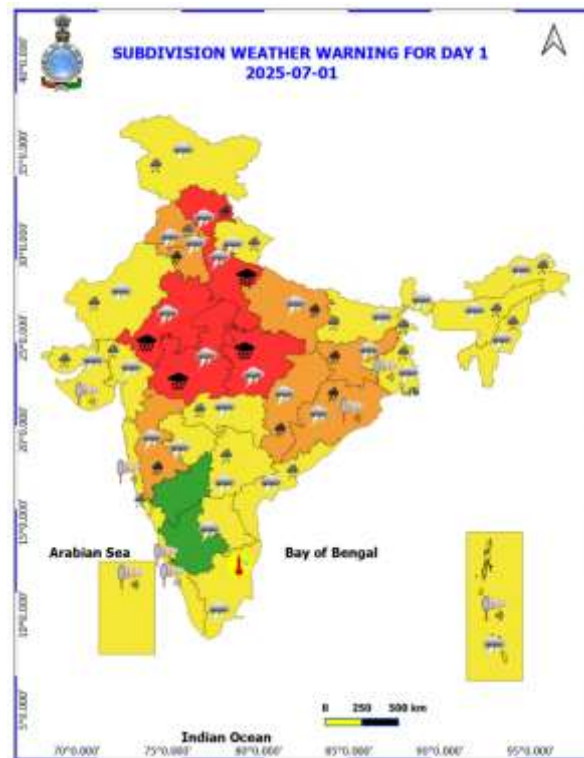
- ❖ **Himachal Pradesh:** Mandi (dist Mandi) 22; Pandoh (dist Mandi) 21; Bijahi (dist Mandi) 20; Karsog (dist Mandi) 16; Palampur (dist Kangra), Chaupal (dist Shimla) 14 Each; Gohar (dist Mandi) 12; Kotkhai (dist Shimla) 8; Nadaun (dist Hamirpur), Narkanda AWS (dist Shimla), Kangra AP (dist Kangra), Sujampur Tira (dist Hamirpur) 7 Each;
- ❖ **East Uttar Pradesh:** Palliakalan (dist Kheri) 21; Fatehpur Tehsil (dist Barabanki) 16; Ayodhya (dist Ayodhya), Kakardharighat (dist Shrawasti) 10 Each; Varanasi BHU (dist Varanasi) 9; Chhibramau (dist Kannauj) 8; Fursatganj (dist Amethi), Sirauli Gauspur Tehsil (dist Barabanki), Bahraich (dist Bahraich), Bindki (dist Fatehpur) 7 Each;
- ❖ **West Madhya Pradesh:** Morena-aws (dist Morena) 20; Gwalior (dist Gwalior) 10; Bankhedi (dist Narmadapuram), Ghatigaon (dist Gwalior) 8 Each; Alipur(jaura) (dist Morena), Ambah (dist Morena), Bairad (dist Shivpuri) 7 Each;
- ❖ **Odisha:** Bamra (dist Sambalpur) 18; Balisankara (dist Sundargarh) 11; Kotpad (dist Koraput) 10; Tensa (dist Sundargarh), Jeypore (dist Koraput), Mathili (dist Malkangiri) 9 Each; Th Rampur (dist Kalahandi), Kutra (dist Sundargarh) 8 Each; Koraput (dist Koraput), Daitari (dist Keonjhar), Lamataput (dist Koraput), Nandapur (dist Koraput), Bijatala (dist Mayurbhanj), Nawarangpur PTO (dist Nawarangpur) 7 Each;
- ❖ **Chhattisgarh:** Shankargarh (dist Balrampur) 16; Aundhi (dist Mohala Manpur Chowki) 12; Antagarh (dist Kanker) 9; Khadgaon (dist Mohala Manpur Chowki) 8; Ramanujganj (dist Balrampur), Durgkondal (dist Kanker), Pakhanjur (dist Kanker), Manpur (dist Mohala Manpur Chowki) 7 Each;
- ❖ **East Madhya Pradesh:** Badamalhera (dist Chhatarpur) 16; Orchha (dist Niwari), Bijawar (dist Chhatarpur) 15 Each; Harrai (dist Chindwara) 10; Palera (dist Tikamgarh) 9; Chahtarpur-aws (dist Chhatarpur) 8; Gadarwara (dist Narsinghpur), Hanumana (dist Rewa), Baldevgarh (dist Tikamgarh), Prithvipur (dist Niwari), Mohangarh (dist Tikamgarh) 7 Each;
- ❖ **East Rajasthan:** Bari (dist Dholpur) 16; Dholpur Tehsil SR (dist Dholpur) 14; Sapau SR (dist Dholpur), Alwar Obs (dist Alwar) 11 Each; Sarmathura SR (dist Dholpur) 10; Baseri SR (dist Dholpur), Bharatpur Tehsil SR (dist Bharatpur) 9 Each; Bayana (dist Bharatpur), Alwar SR (dist Alwar) 8 Each; Rajakhera (dist Dholpur) 7;
- ❖ **Madhya Maharashtra:** Radhanagari (dist Kolhapur) 14; Shahuwadi (dist Kolhapur), Gaganbawada (dist Kolhapur) 9 Each; Mahabaleshwar (dist Satara), Lonavala ARG (dist Pune) 8 Each; Trimbakshwar (dist Nashik) 7;
- ❖ **Gujarat Region:** Kaprada (dist Valsad) 11; Vyara (dist Tapi) 10; Kalol (dist Panchmahal) 8; Bardoli (dist Surat), Songadh (dist Tapi) 7 Each;
- ❖ **Jharkhand:** Bau Kanke (dist Ranchi), Herhanj (dist Latehar) 11 Each; Panki (dist Palamu), Kurdeg (dist Simdega), Bhurkunda (dist Ramgarh) 9 Each; Dhalbhumgarh (dist East Singhbhum) 8; Goikera (dist West Singhbhum) 7;
- ❖ **Assam & Meghalaya:** Majbat (dist Udalguri), Mazbat ARG (dist Udalguri), Tezpur (dist Shonitpur) 11 Each; Sonari ARG (dist Charaideo) 9; Mawsynram (dist East Khasi Hills) 7;
- ❖ **West Uttar Pradesh:** Rath (dist Hamirpur), Muzaffarnagar (dist Muzaffarnagar) 10 Each; Khairagarh (dist Agra), Orai (dist Jalaun) 9 Each; Jhansi (dist Jhansi) 7;
- ❖ **Bihar:** Indrapuri (dist Rohtas) 9;
- ❖ **Telangana:** Jagadevpur (dist Siddipet) 8;
- ❖ **Saurashtra & Kutch:** Ranavav (dist Porbandar), Kalavad (dist Jamnagar) 8 Each; Manavadar (dist Junagadh), Junagadh (dist Junagadh) 7 Each;
- ❖ **Haryana-Chandigarh-Delhi:** Jagadhari (dist Yamuna Nagar), Revenue Office AWS (dist Charkhi Dadri), Jhajjar AWS (dist Jhajjar) 8 Each; Dadri (dist Charkhi Dadri), Nagina REV (dist Nuh) 7 Each;
- ❖ **Konkan & Goa:** Poladpur (dist Raigad) 7.

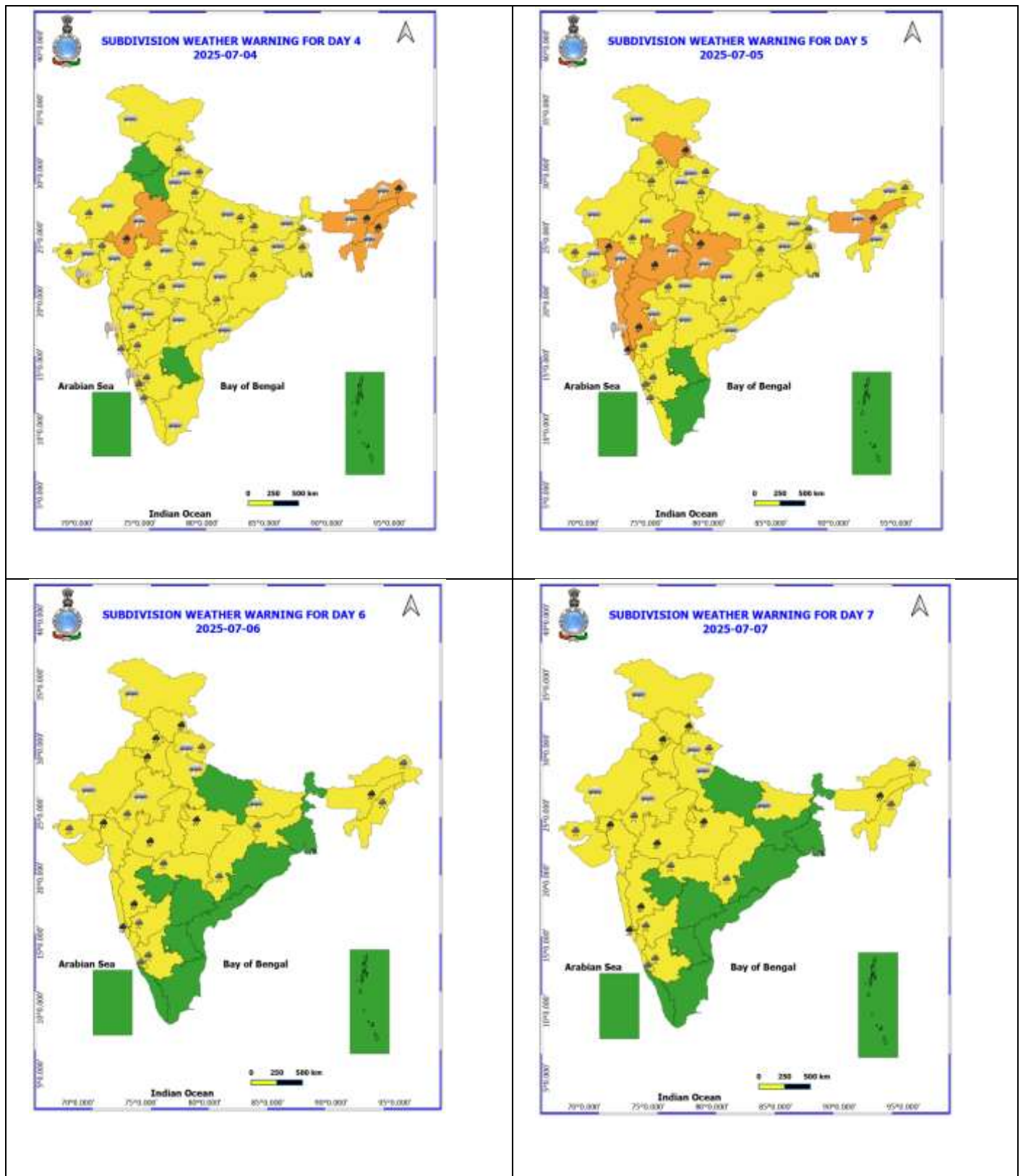
Realised Gusty Winds (kmph) During Past 24hours ending at 0830 hrs IST of today the 01st July:

- ❖ **Himachal Pradesh:** Rekong Peo-67, Bajaura-39;
- ❖ **Madhya Maharashtra:** Vilholi (Nashik) - 61 Kmph, Kurvande (Pune) - 61 Kmph, Mahabaleshwar (Satara) - 57 Kmph;
- ❖ **Punjab:** Saleran (Hoshiarpur) = 59; Jalandhar = 44; Moga = 37;
- ❖ **West Madhya Pradesh:** Ujjain 54 Kmph;
- ❖ **Andaman & Nicobar Islands:** Shri Vijayapurma(52), Rangat_Nimbutala(35) Swaraj_Deep(35), Mayabunder(31);
- ❖ **Marathwada** - Ambejogai (Beed) - 50 Kmph, Jalna - 43 Kmph, Tulga (Dharashiv) - 41 Kmph
- ❖ **Jharkhand:** Barhi(46), Giridh-Bengabad(33), Godda(17);
- ❖ **Konkan:** Santacruz - 46 Kmph;
- ❖ **Bihar:** Itt-Patna(44), Banka(43), Sheikpura(39) East-Champaran(35), Saraiya(35) Bhojpur, Dumaraon, Sukhet(33), Khagaria, Madhepura, Pusa, Supaul(31);
- ❖ **East Uttar Pradesh:** Fursatganj(Aws)-43, Barabanki, Goorakhpur(Aws) & Integral_University-39 Each;

Table-1								
7 Days Rainfall Forecast								
S.No.	Subdivision	1- Jul	2- Jul	3- Jul	4- Jul	5- Jul	6- Jul	7- Jul
		Day 1	Day 2	Day 3	Day 4	Day 5	Day 6	Day 7
1	ANDAMAN & NICOBAR ISLANDS	FWS	FWS	FWS	FWS	FWS	FWS	FWS
2	ARUNACHAL PRADESH	FWS	FWS	FWS	FWS	FWS	SCT	SCT
3	ASSAM & MEHGHALAYA	FWS	FWS	FWS	FWS	FWS	FWS	FWS
4	NAGALAND, MANIPUR, MIZORAM AND TRIPURA	FWS	FWS	FWS	FWS	FWS	FWS	FWS
5	SUB HIMALAYAN WEST BENGAL & SIKKIM	FWS	FWS	FWS	FWS	FWS	FWS	FWS
6	GANGETIC WEST BENGAL	FWS	FWS	FWS	FWS	FWS	SCT	FWS
7	ODISHA	FWS	FWS	FWS	FWS	FWS	FWS	FWS
8	JHARKHAND	FWS	FWS	FWS	FWS	FWS	FWS	FWS
9	BIHAR	FWS	FWS	FWS	FWS	FWS	SCT	SCT
10	EAST UTTAR PRADESH	FWS	FWS	FWS	FWS	FWS	SCT	SCT
11	WEST UTTAR PRADESH	FWS	FWS	FWS	FWS	FWS	FWS	FWS
12	UTTARAKHAND	FWS	FWS	FWS	FWS	FWS	FWS	FWS
13	HARYANA, CHANDIGARH & DELHI	FWS	FWS	FWS	FWS	FWS	FWS	FWS
14	PUNJAB	FWS	FWS	FWS	FWS	FWS	FWS	FWS
15	HIMACHAL PRADESH	FWS	FWS	FWS	FWS	FWS	FWS	FWS
16	JAMMU AND KASHMIR AND LADAKH	SCT	SCT	SCT	SCT	SCT	SCT	SCT
17	WEST RAJASTHAN	ISOL	ISOL	ISOL	SCT	SCT	SCT	SCT
18	EAST RAJASTHAN	FWS	FWS	FWS	FWS	FWS	FWS	FWS
19	WEST MADHYA PRADESH	FWS	FWS	FWS	FWS	FWS	FWS	FWS
20	EAST MADHYA PRADESH	FWS	FWS	FWS	FWS	FWS	FWS	FWS
21	GUJRAT REGION	FWS	FWS	FWS	FWS	FWS	FWS	FWS
22	SAURASHTRA & KUTCH	FWS	FWS	FWS	FWS	FWS	FWS	FWS
23	KONKAN & GOA	FWS	FWS	FWS	FWS	FWS	FWS	FWS
24	MADHYA MAHARASHTRA	FWS	SCT	SCT	SCT	FWS	FWS	FWS
25	MARATHWADA	FWS	SCT	ISOL	ISOL	SCT	SCT	ISOL
26	VIDARBHA	FWS	FWS	FWS	FWS	FWS	FWS	FWS
27	CHHATTISGARH	FWS	FWS	FWS	FWS	FWS	FWS	FWS
28	COASTAL ANDHRA PRADESH	FWS	SCT	SCT	SCT	SCT	SCT	SCT
29	TELANGANA	FWS	FWS	SCT	SCT	SCT	SCT	SCT
30	RAYALASEEMA	ISOL	ISOL	ISOL	ISOL	ISOL	ISOL	ISOL
31	TAMILNADU & PUDUCHERRY	ISOL	ISOL	SCT	SCT	SCT	ISOL	ISOL
32	COSTAL KARNATAKA	FWS	FWS	FWS	FWS	FWS	FWS	FWS
33	NORTH INTERIOR KARNATAKA	FWS	FWS	FWS	SCT	SCT	SCT	SCT
34	SOUTH INTERIOR KARNATAKA	FWS	FWS	FWS	FWS	SCT	SCT	SCT
35	KERALA AND MAHE	FWS	FWS	FWS	FWS	FWS	FWS	FWS
36	LAKSHADWEEP	FWS	FWS	FWS	FWS	FWS	SCT	SCT

- As the lead period increases forecast accuracy decreases.





- Action may be taken based on ORANGE AND REDCOLOUR warnings.
- Vulnerable regions likely urban and hilly areas action may be initiated for heavy rainfall warning.
- As the lead period increases forecast accuracy decreases.

Detailed districtwise Multi Hazard weather warning for next five days available at <https://mausam.imd.gov.in/responsive/districtWiseWarningGIS.php>

Weather forecast over Delhi/NCR during 01st to 04th July 2025**Past Weather:**

No Large in minimum temperatures and appreciable fall in maximum temperatures in past 24 hours over Delhi. The maximum temperatures were in the range of 29-31°C and minimum temperatures are in the range of 23-26°C respectively. The minimum temperatures are appreciably below normal and maximum temperatures were markedly below normal by 6-7°C over Delhi. Generally cloudy sky conditions with predominant surface wind from the southeast-east direction with wind speeds up to 15 kmph prevailed during the past 24 hours. Very light to light rainfall has been recorded in most parts of Delhi. Generally cloudy sky conditions with wind speed less than 10 kmph from the east direction prevailed over the region in the forenoon today.

Weather Forecast:

01.07.2025: Partly cloudy sky. Very light to light rain accompanied with thunderstorm/lightning. The maximum temperatures over Delhi are likely to be in the range of 32 to 34°C. The maximum temperature will be below normal up to 3 - 5°C. The predominant surface wind will likely be from the east direction with a wind speed of less than 15 kmph in the afternoon. The wind speed will gradually decrease becoming 10-15 kmph from the east direction during evening and night.

02.07.2025: Partly cloudy sky. Very light to light rain accompanied with thunderstorm/lightning. The maximum and minimum temperatures over Delhi are likely to be in the range of 33 to 35°C and 25 to 27°C respectively. The minimum temperature will be below normal up to 1 to 2°C and the maximum temperature will be below normal up to 2 to 4°C. The predominant surface wind will likely be from the southwest direction with a wind speed of less than 10 kmph during the morning hours. The wind speed will gradually decrease becoming less than 08 kmph from the southwest direction in the afternoon. It will increase to less than 10 kmph from the southwest direction during the evening and night.

03.07.2025: Partly cloudy sky. Very light to light rain accompanied with thunderstorm/lightning. The maximum and minimum temperatures over Delhi are likely to be in the range of 32 to 34°C and 26 to 28°C respectively. The minimum temperature will be near normal and the maximum temperature will be below normal up to 3 to 5°C. The predominant surface wind will likely be from the south direction with a wind speed of less than 15 kmph during the morning hours. The wind speed will gradually increase becoming less than 20 kmph from the southeast direction in the afternoon. It will decrease to less than 12 kmph from the south direction during the evening and night.

04.07.2025: Partly cloudy sky. Very light to light rain accompanied with thunderstorm/lightning. The maximum and minimum temperatures over Delhi are likely to be in the range of 31 to 33°C and 26 to 28°C respectively. The minimum temperature will be near normal and the maximum temperature will be below normal up to 4 to 6°C. The predominant surface wind will likely be from the north-northeast direction with a wind speed of less than 08 kmph during the morning hours. The wind speed will gradually increase becoming less than 12 kmph from the southeast direction in the afternoon. It will decrease to less than 10 kmph from the south direction during the evening and night.

Impact expected and Action Suggested due to thunderstorm with lightning/gusty winds:

- Be cautious and take precautionary measures, though there is the likelihood of thunderstorm/lightning.
- Breaking of tree branches, uprooting of large avenue trees, Large dead limbs blown from trees, Damage to standing crops, Minor to major damage to power and communication lines due to breaking of branches, Partial damage to vulnerable structures due to strong winds, Loose objects may fly.
- People are advised to keep a watch on the weather for worsening conditions and be ready to move to safer places accordingly, stay indoors, close windows & doors and avoid travel if possible, take safe shelters; do not take shelter under trees, do not lie on concrete floors and do not lean against concrete walls, unplug electrical/ electronic appliances, immediately get out of water bodies, keep away from all the objects that conduct electricity.

Impact & Action Suggested due to very heavy/extremely heavy rainfall:

- ✓ **Extremely heavy rainfall (>20 cm)** very likely at isolated places over West Uttar Pradesh, East Rajasthan and Madhya Pradesh on 01st July.
- ✓ **Very heavy rainfall** over Himachal Pradesh on 01st & 02nd and during 05th-07th; Uttarakhand on 02nd; Punjab on 06th & 07th; Haryana on 01st, 06th & 07th; Uttar Pradesh on 01st & 02nd July and East Rajasthan during 01st-04th July; Madhya Pradesh on 02nd and during 05th-07th; Jharkhand on 01st; Odisha during 01st-03rd July; Konkan & Goa, Madhya Maharashtra, Gujarat Region, Arunachal Pradesh, Assam & Meghalaya³, Nagaland, Manipur, Mizoram & Tripura during 01st-07th July.

Impact Expected

- Localized Flooding of roads, water logging in low lying areas and closure of underpasses mainly in urban areas of the above region.
- Occasional reduction in visibility due to heavy rainfall.
- Disruption of traffic in major cities due to water logging in roads leading to increased travel time.
- Minor damage to kutchha roads.
- Possibilities of damage to vulnerable structure.
- Localized Landslides/Mudslides/landslips/mudslips/landsinks/mudsinks.
- Damage to horticulture and standing crops in some areas due to inundation.
- It may lead to riverine flooding in some river catchments (for riverine flooding please visit Web page of CWC)

Action Suggested

- Check for traffic congestion on your route before leaving for your destination.
- Follow any traffic advisories that are issued in this regard.
- Avoid going to areas that face the water logging problems often.
- Avoid staying in vulnerable structure.

Agromet advisories for likely impact of Heavy / Heavy to Very Heavy / Extremely Heavy Rainfall

- In **Odisha**, postpone sowing of maize, green gram, papaya, banana and vegetable crops. Ensure proper drainage from already sown rice nurseries, fields of maize and vegetables to prevent waterlogging. Cover rice and vegetable nurseries with plastic sheets to prevent the washing away of seeds. Provide strong wooden support for papaya and banana plants to avoid lodging due to strong winds.
- **Jharkhand** – Postpone sowing of pigeon pea, finger millet and paddy nurseries. Make necessary arrangements to drain out excess water from already sown maize fields, rice and vegetable nurseries. Cover the vegetable nurseries with polythene sheets.
- In **West Madhya Pradesh**, postpone harvesting of maize. Postpone sowing of pearl millet, soybean, pigeon pea and paddy nurseries. Make necessary arrangements to drain out excess water from vegetables and orchards to avoid waterlogging. In **East Madhya Pradesh**, keep the harvested produce of maize, green gram and black gram in safe places. Ensure proper drainage in already sown / transplanted fields.
- In **Chhattisgarh**, ensure proper drainage in rice nurseries.
- In **Himachal Pradesh**, provide drainage in the fields of vegetables and fruit orchards. Strengthen the support for creepers and tall vegetable crops (tomato, capsicum etc.). Harvest matured fruits of plum, pear, stone fruit and keep in safe places to minimize losses due to heavy rains. Postpone sowing of maize and transplanting of rice. Drain out excess water from rice nurseries and already sown maize fields.
- In **Uttarakhand**, ensure proper drainage facilities in pigeon pea, groundnut, maize, sugarcane, barnyard millet, finger millet, already sown rice nurseries, kidney beans, blackgram, green gram, vegetable and orchards. Harvest matured vegetables (pumpkin, tomato, okra, chilli, French bean etc.) and fruits and store in safe place. Tie the sugarcane plants together to avoid lodging.
- **West Uttar Pradesh**, postpone sowing of maize. Drain out excess water from already sown maize, rice nurseries, vegetables, pigeon pea and sugarcane. Tie the sugarcane plants together to avoid lodging. In **East Uttar Pradesh**, drain out excess water from vegetables, late sown rice, nurseries groundnut, green gram and maize.
- In **East Rajasthan**, harvest the matured vegetables such as okra and cucurbits and store them in safe place. Make arrangement for draining out excess water from the fields of groundnut and green gram.
- In **Punjab**, drain out excess water from already sown cotton, rice, vegetables and fruit crops.
- In **Haryana** - Make necessary arrangements to drain out excess water from cotton and pearl millet fields.
- In **Gujarat** make necessary arrangements to drain out excess water in already sown rice nurseries, sugarcane fields, banana and mango plantations to prevent waterlogging. Provide support to sugarcane and banana to prevent lodging. In **Saurashtra & Kutch**, drain out excess rain water from vegetable nurseries and horticultural plantations. Undertake propping in sugarcane with strong bamboo or tie the leaves together in a clump to protect against wind and heavy rain.

- In **Konkan & Goa**, make arrangements to drain out excess water from rice nurseries, fields of finger millet, groundnut and orchards to prevent waterlogging. In **ghat areas of Madhya Maharashtra**, drain out excess water from rice nurseries, vegetables and orchards to prevent waterlogging.
- In **Arunachal Pradesh**, to protect the maize crop from damage due to runoff and soil erosion, construct small bunds or contour barriers across the slope to reduce water flow and soil loss. Avoid fresh transplanting of rice in low-lying areas. Provide strong support to banana plants using bamboo or wooden stakes to prevent lodging or stem breakage.
- In **Assam**, keep the harvested produce of sesame, foxtail millet, *Boro* rice, banana and citrus at safer places. Ensure proper drainage in *Sali* rice nursery, maize and sugarcane fields, arecanut and coconut plantations to prevent waterlogging. In **Barak Valley Zone of Assam**, postpone nursery sowing of *Sali* rice.
- In **Meghalaya**, postpone nursery sowing of rice especially in valleys. Ensure proper drainage in the fields of maize, ginger, French bean, cowpea, vegetables and around rice nurseries to prevent waterlogging. Provide strong bamboo stakes or trellis support to cow pea, cucumber and bottle gourd to prevent vines from trailing on wet ground. Provide support to banana plant to prevent lodging.

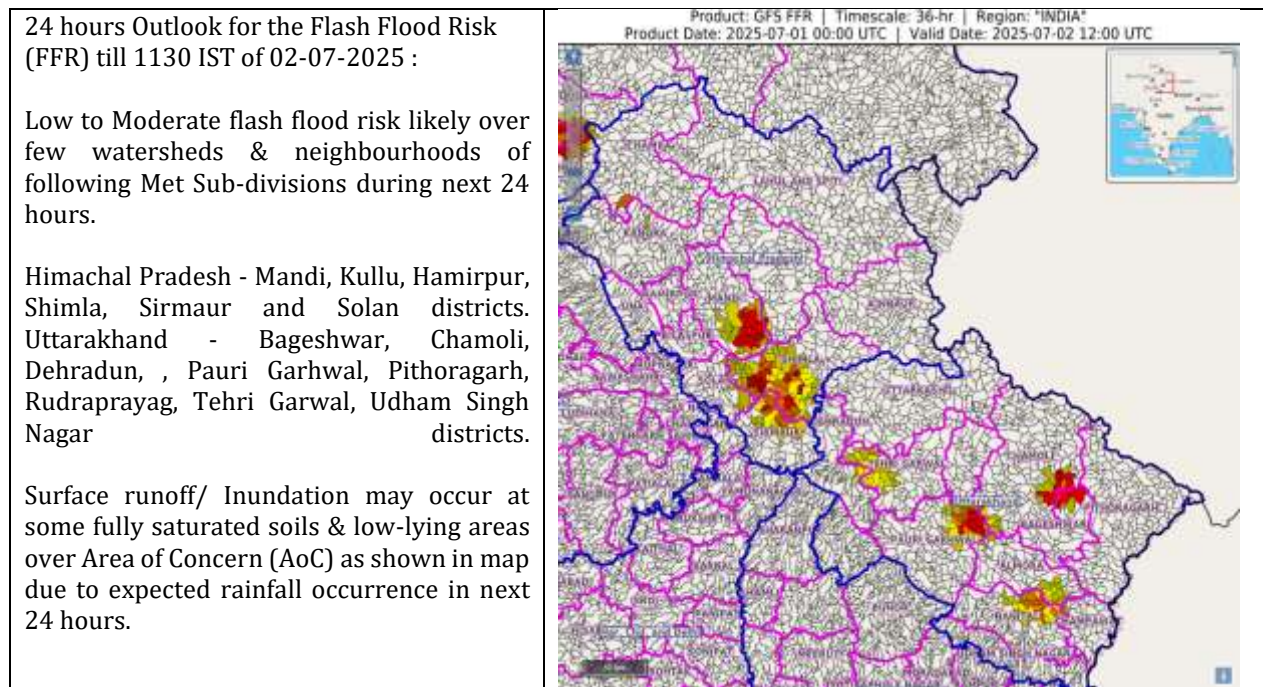
Livestock / Fishery

- Keep the animals inside the shed during heavy rainfall and provide them balanced feed.
- Store feed and fodder in a safe place to prevent spoilage.
- Construct an outlet with proper netting around the ponds to drain out excess water, thereby preventing fish from escaping in case of overflow.

Agromet advisories for likely impact of Thunderstorm / Gusty Winds / Squally Winds

- Provide mechanical support to horticultural crops and staking or support to vegetables and young fruit plants / fruit-bearing plants to avoid lodging due to strong winds.

Flash flood guidance:



24 hours Outlook for the Flash Flood Risk (FFR) till 1130 IST of 02-07-2025 :

Low to Moderate to High flash flood risk likely over few watersheds & neighbourhoods of following Met Sub-divisions during next 24 hours.

Odisha - Mayurbhanj, Sambalpur, districts.
Jharkhand - Chatra, East Singhbhum, Garhwa, Gumla, Hazaribagh, Latehar, Lohardaga, Palamu, Ranchi, Saraikela, Simdega, Ramgarh, Bokara, Dhanbad, , Khunti and West Singhbhum districts.

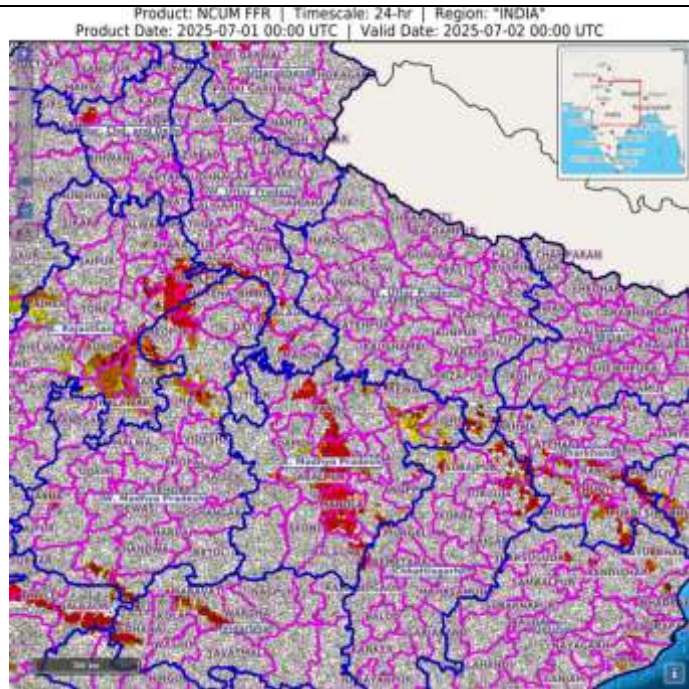
Chhattisgarh – Jashpur, Balrampur, Surajpur, Korea, Surguja, Korba, Raigarh, Mungeli & Bilaspur districts.

West Madhya Pradesh – Sheopur, Shivpuri, Guna, Ashoknagar, Videsha, Shajapur, Ujjain, Agar-Malwa, Dewas, Sehore, Ratlam, Mandsaur, Nimach, Jhabua and Hoshangabad districts.

East Madhya Pradesh – Sagar, Timakgar, Chhatarpur, Damoh, Panna, Satna, Katni, Narsimhapur, Jabalpur, Mandla, Seoni, Balaghat, Chhindwara, Dindori, Anuppur, Umaria, Shahdol and Sidhi districts.

East Rajasthan – Tonk, Sawaimadhopur, Ajmer, Bhilwara, Bundi, Kota, Baran, Halawar, Pratapgarh and Banswara districts.

Surface runoff/ Inundation may occur at some fully saturated soils & low-lying areas over Area of Concern (AoC) as shown in map due to expected rainfall occurrence in next 24 hours.



Legends & abbreviations:

- ❖ **Heavy Rain:**64.5-115.5mm; **Very Heavy Rain:**115.6-204.4mm; **Extremely Heavy Rain:** >204.4mm.
- ❖ **Obsy:** Observatory; Automatic Weather Station; **ARG:** Automatic Rain Gauge; **dist:** District; **NH:** National Highway; **KVK:** Krishi Vigyan Kendra; **DVC:** Damodar Valley Corporation; **PTO:** Part Time Office, **Aero:** Aerodrome, **IAF:** Indian Air Force.
- ❖ **Region wise classification of meteorological Sub-Divisions:**
 - **Northwest India:** Western Himalayan Region (Jammu-Kashmir-Ladakh-Gilgit-Baltistan-Muzaffarabad, Himachal Pradesh and Uttarakhand); Punjab, Haryana-Chandigarh-Delhi; West Uttar Pradesh, East Uttar Pradesh, West Rajasthan and East Rajasthan.
 - **Central India:** West Madhya Pradesh, East Madhya Pradesh, Vidarbha and Chhattisgarh.
 - **East India:** Bihar, Jharkhand, Sub-Himalayan West Bengal & Sikkim; Gangetic West Bengal, Odisha and Andaman & Nicobar Islands.
 - **Northeast India:** Arunachal Pradesh, Assam & Meghalaya and Nagaland, Manipur, Mizoram & Tripura.
 - **West India:** Gujarat Region, Saurashtra & Kutch, Konkan & Goa, Madhya Maharashtra and Marathawada.
 - **South India:** Coastal Andhra Pradesh & Yanam, Telangana, Rayalaseema, Coastal Karnataka, North Interior Karnataka, South Interior Karnataka, Kerala & Mahe, Tamil Nadu, Puducherry & Karaikal and Lakshadweep.

LEGENDS

1. अंडमान और निकोबार द्वीपसमूह

2. अरुणाचल प्रदेश

3. असम और मेघालय

4. नागालैंड, मणिपुर, मिजोरम और त्रिपुरा

5. उप-हिमालयी पश्चिम बंगाल और सिक्किम

6. गंगीय पश्चिम बंगाल

7. ओडिशा

8. झारखंड

9. बिहार

10. पूर्वी उत्तर प्रदेश

11. पश्चिम उत्तर प्रदेश

12. उत्तराखंड

13. हरियाणा, चंडीगढ़ और दिल्ली

14. पंजाब

15. हिमाचल प्रदेश

16. जम्मू और कश्मीर और लद्दाख

17. पश्चिम राजस्थान

18. पूर्वी राजस्थान

19. पश्चिम मध्य प्रदेश

20. पूर्वी मध्य प्रदेश

21. गुजरात

22. सौराष्ट्र

23. कोंकण और गोवा

24. मध्य महाराष्ट्र

25. मराठवाड़ा

26. विदर्भ

27. छत्तीसगढ़

28. तटीय आंध्र प्रदेश और यनम

29. तेलंगाना

30. रायलसीमा

31. तमिलनाडु, पुडुचेरी और कराईकल

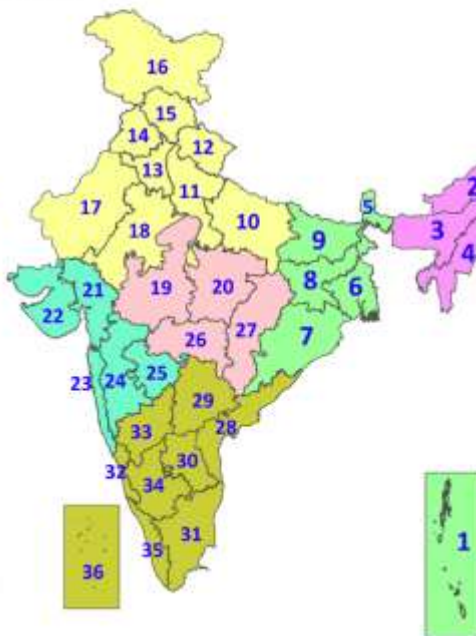
32. तटीय कर्नाटक

33. आंतरिक उत्तरी कर्नाटक

34. आंतरिक दक्षिणी कर्नाटक

35. केरल और माहे

36. लक्षद्वीप



1. Andaman & Nicobar Islands

2. Arunachal Pradesh

3. Assam & Meghalaya

4. Nagaland, Manipur, Mizoram & Tripura

5. Sub-Himalayan West Bengal & Sikkim

6. Gangetic West Bengal

7. Odisha

8. Jharkhand

9. Bihar

10. East Uttar Pradesh

11. West Uttar Pradesh

12. Uttarakhand

13. Haryana, Chandigarh & Delhi

14. Punjab

15. Himachal Pradesh

16. Jammu & Kashmir and Ladakh

17. West Rajasthan

18. East Rajasthan

19. West Madhya Pradesh

20. East Madhya Pradesh

21. Gujarat

22. Saurashtra

23. Konkan & Goa

24. Madhya Maharashtra

25. Marathwada

26. Vidarbha

27. Chhattisgarh

28. Coastal Andhra Pradesh & Yanam

29. Telangana

30. Rayalaseema

31. Tamilnadu, Puducherry & Karaikal

32. Coastal Karnataka

33. North Interior Karnataka

34. South Interior Karnataka

35. Kerala & Mahe

36. Lakshadweep

SPATIAL DISTRIBUTION (% of Stations reporting)

% Stations	Category	% Stations	Category
76-100	Widespread (WS/Most Places)	26-50	Scattered (SCT/A Few Places)
51-75	Fairly Widespread (FWS/Many Places)	1-25	Isolated (ISOL)



Fog



Heavy Snow



Cold Wave



Heavy Rain



Dust Storm



Cold Day



Very Heavy Rain



Heat Wave



Ground Frost



Extremely Heavy Rain



Warm Night



Thunder & Lightning



Hot Day



Hailstorm



Hot & Humid



Dust Raising Winds



Strong Surface Winds

COLOUR CODED WARNING

No Warning (No Action)

Watch (Be Aware)

Alert (Be Prepared To Take Action)

Warning (Take Action)

Probabilistic Forecast

Terms	Probability of Occurrence (%)
Unlikely	< 25
Likely	25 - 50
Very Likely	50 - 75
Most Likely	> 75

* Red colour warning does not mean "Red Alert", Red colour warning means "Take Action".

Forecast and Warning for any day is valid from 0830 hours IST of day till 0830 hours IST of next day.

For more details, kindly visit <https://mausam.imd.gov.in> or contact: 011-2434-4599

(Service to the Nation since 1875)

DEFINITION/CRITERIA

Rain/ Snow *

Heavy: 64.5 to 115.5 mm/cm *
Very Heavy: 115.6 to 204.4 mm/cm *
Extremely Heavy: > 204.4 mm/cm *

Heat Wave

When maximum temperature of a station reaches $\geq 40^{\circ}\text{C}$ for plains and $\geq 30^{\circ}\text{C}$ for hilly regions
(a) Based on Departure from normal

Heat Wave: Maximum Temperature Departure from normal 4.5°C to 6.4°C .

Severe Heat Wave: Maximum Temperature Departure from normal $\geq 6.5^{\circ}\text{C}$

(b). Based on Actual maximum temperature

Heat Wave: When actual maximum temperature $\geq 45^{\circ}\text{C}$.

Severe Heat Wave: When actual maximum temperature $\geq 47^{\circ}\text{C}$.

(c). Criteria for heat wave for coastal stations

When maximum temperature departure is $> 4.5^{\circ}\text{C}$ from normal. Heat Wave may be described provided maximum temperature $\geq 37^{\circ}\text{C}$.

Warm Night

When maximum temperature remains 40°C

Warm Night: When minimum temperature departure 4.5°C to 6.4°C .

Severe Warm Night: When minimum temperature departure $> 6.4^{\circ}\text{C}$.

Cold Wave

When minimum temperature of a station $\leq 10^{\circ}\text{C}$ for plains and $\leq 0^{\circ}\text{C}$ for hilly regions.

(a). Based on departure

Cold Wave: Minimum Temperature Departure from normal -4.5°C to -6.4°C .

Severe Cold Wave: Minimum Temperature Departure from normal $\leq -6.5^{\circ}\text{C}$

(b) Based on actual Minimum Temperature (for Plains only)

Cold Wave: When Minimum Temperature is $\leq 4.0^{\circ}\text{C}$

Severe Cold Wave: When Minimum Temperature is $\leq 2.0^{\circ}\text{C}$

(c) For Coastal Stations

When Minimum Temperature departure is $\leq -4.5^{\circ}\text{C}$ & actual Minimum Temperature is $\leq 15^{\circ}\text{C}$

Cold Day

When minimum temperature of a station $\leq 10^{\circ}\text{C}$ for plains and $\leq 0^{\circ}\text{C}$ for hilly regions

Based on departure

Cold Day: Maximum Temperature Departure from normal -4.5°C to -6.4°C .

Severe Cold Day: Maximum Temperature Departure from normal $\leq -6.5^{\circ}\text{C}$

Fog

Phenomenon of small droplets suspended in air and the horizontal visibility $< 1\text{km}$

Moderate Fog: When the visibility between 500-200 metres

Dense Fog: when the visibility between 50- 200 metres

Very Dense Fog: when the visibility < 50 metres

Thunderstorm

Sudden electrical discharges manifested by a flash of light (Lightning) and a sharp rumbling sound (thunder)

Dust/Sand Storm

An ensemble of particles of dust or sand energetically lifted to great heights by a strong and turbulent wind.

Frost

Ice deposits on ground

Air temperature $\leq 4^{\circ}\text{C}$ (over Plains)

Squall

A strong wind that rises suddenly, lasts for atleast 1 minute.

Moderate: Wind speed 52-61 kmph

Severe: Wind speed 62-67 kmph

Very Severe: Wind speed > 67 kmph

Sea State

Effect of various waves in the sea over specific area

Rough to very rough: Wind speed 41-62 kmph (22-33 knots) & Wave height 2.5-6 metre

High to very high: Wind speed 63-117 kmph (34-63 knots) & Wave height 6-14 metre

Phenomenal: Wind speed > 117 kmph (> 63 knots) & Wave height > 14 metre

Cyclone

Cyclonic Storm: Wind speed 62-87 kmph (34-47 knots)

Severe Cyclonic Storm: Wind speed 88-117 kmph (48-63 knots)

Very Severe Cyclonic Storm: Wind speed 118-165 kmph (64 - 89 knots)

Extremely Severe Cyclonic Storm: Wind speed 166-220 kmph (90 -119 knots)

Super Cyclone Storm: Wind speed > 220 kmph (> 119 knots)

* Red colour warning does not mean "Red Alert", Red colour warning means "Take Action".

Forecast and Warning for any day is valid from 0830 hours IST of day till 0830 hours IST of next day.

For more details, kindly visit <https://mausam.imd.gov.in> or contact: 011-2434-4599

(Service to the Nation since 1875)

Hot and Humid: When maximum temperatures remain 3°C above normal along with the above normal relative humidity.